

**LANAKILA
KŪPUNA
NEWS**



Inside This Issue:

**Christmas
Drive Thru
Pick Up Soon**

Message from Prog Coordinator	2
Sharing Old Times	3
Cultural Club Updates	4
Mahalo to Our Donors	7
Christmas Messages	8
Schedule of Classes	11
Upcoming Events	12



A program of Catholic Charities Hawai'i funded in part by the State of Hawaii via contract with the State Executive Office on Aging (EOA) and the C&C of Honolulu, Elderly Affairs Division, and a Persons In Need grant from the May Templeton Hopper Fund of the Hawai'i Community Foundation..

A MESSAGE FROM SUSIE

Aloha e Lanakila Senior Center Ohana! It is truly remarkable that so many people from our senior center and the larger community came together to make 2021 a memorable year for so many. People offered their time, talent, resources, and knowledge and provided over 1,600 online activities and hundreds of face-to-face events for our seniors this year. A whirlwind of fun, learning, socializing, and community service to help others.

The beautiful hula dancers from the Korean Cultural Club and Harmony's Hula Class graced our morning with "God Bless American", "Kawika", "Maile Lei", and "The Prayer" to honor our veterans on November 9, 2021. Mahalo to Portuguese Cultural Club President Puna Frank for presenting handmade fans and lei to the veterans who came in-person and the fresh flower lei from Kumu Harmony Brighter and her class. Thank you to Veteran Frank Toma for leading us in the "Pledge of Allegiance" and he and Veteran Richard Tada for providing the sound equipment that morning. We hope that our 128 veteran center members enjoyed the program and hope all veterans across the nation enjoyed their day!

We are truly grateful to the many volunteers and staff who helped with our Thanksgiving Celebration on November 10th. Alicia Nagasawa, Amy Bratt, Atsuko Sakumoto, Carol Zukemura, Clarice Kumura, Cookie Irvine, Diane Kawakami, Frank Toma, Iris Hiramoto, Janet Miyashiro, Aileen Unten, Jean Sugihara, Jean Sugiyama, Jeanette Shiohira, Karen Matsunaga, Lodi Tapawan, Lovyna Maynes, Mae Hong, Marty Kaili, Mary Sueda, Mona Bernardo, Mona Chock, Patrick Young, Puna Frank, R. Donald Brough, Richard Tada, Riva Torno, Rose Yanagawa, Sandra Gorski-Brough, and Sue Fujitani did an outstanding job! Chief Financial Officer Greg Pang and Sylvia Young from HawaiiUSA Federal Credit Union joined us and pitched in to serve the 520 Thanksgiving meals to our members. Mahalo to Nao Iwata and the Kahai Street Kitchen staff for preparing the ono food.

The lovely Thanksgiving gifts for each member was lovingly put together by Lanakila's Special Events Committee. Also, mahalo a nui loa for contributions, including Center member Lee Myers and her friend Deidra Freitas for making the flower pens, George Doi from Premier Benefit Consultants and Lindsey Ilagan from Hawaii Public Health Institute for the hand sanitizers, Center member Lou Maynes and others for the handmade book markers, and treats from the Special Events Committee.

We thank everyone who donated plants and purchased them at the center's plant sale on November 8, 2021!!! We have many great gardeners and thoughtful members at Lanakila!!

Mahalo to Amy Sakagawa, Calvin Oka, Cynthia Mori, Elaine Lee, Fred Lum, Irene Oka, June Ng, Nora Kimura, Pauline Baba, Robert Cadelinda, Sharon Hirose, Stephanie Underwood, Steven Sakagawa, Tony Tolaney, and Wendy Tachikawa, who helped bring our clothing and household donations to SAVERS Dillingham to support the last FUNraiser for our senior center.

We are also deeply grateful to the 236 Lanakila Senior Center members who donated \$22,528 towards our Annual Donation Drive. This is an incredible act of generosity to support the programs at our senior center. Mahalo a nui loa!!

We look forward to seeing you this month for the Winter Session Registration for classes; daily Thrift Store shopping; class and cultural club activities; mini tours of the senior center; relaxation and social activities; tours to Queen Emma Summer Palace in Nu'uano, Tenrikyo Honolulu Ko on Judd Street, MOA Hawaii on Pali Highway, and the Liljestrand Home in Tantalus; the "Lights in a Bottle" and other craft activities; The LAFF Guy presentation with Gerry Yahata; and a special drive-through Christmas Celebration event on December 10th! We also hope you enjoy the beautiful holiday decorations at our senior center. Please call (808) 847-1322 if you plan to stop by to enjoy the center's holiday cheer.

Finally, it is with mixed emotions that we announce that our Program Support Assistant Elizabeth "Cookie" Irvine is retiring at the end of the year, after 26 years of service with Catholic Charities Hawaii. She has been an invaluable part of our Lanakila Ohana and her sense of humor, caring ways and dedication to our seniors will be sorely missed. We wish her and her husband, Keith, happy travels and a lifetime of happiness. We know Cookie will still volunteer to help our center and we will always treasure her friendship. Thank you, Cookie, for everything!!!! Happy holidays to you all from Cookie, Iris, Lodi, Riva, our senior center members and volunteers, and me.

Mele Kalikimaka, everyone!

Peace and love at Christmas and always,
Susie Chun Oakland
Program Coordinator



Welcome New Members!

Diane Awakuni
Wayne Awakuni
Nancy China
Canossa Choy
Tanee Connally
Melvin Ebisuya
Dennis Egge
Francisca Fabinal

Eileen Kajioka
Christy Kawabata
Coleen Kikuchi
Henriann Kikuta
Hyoung Kiel
Sandra Kim
Hugh Lee
Florentine "Tina" Lumabao

Robert Matsumoto
Joyce Matsuo
Betty Schoeppner
Filonila Soriano
Lucile Soong
Simeona "Mona" Supnet
Brian Suzuki
Anthony Tolaney

Yongsuk Yi-Jackson
Roger Yim
Geraldine S. Young



Aloha 'Oe!

To My Lanakila Family:

As some of you may know, I will be retiring at the end of this year. I have been privileged to be a part of this special family at Lanakila for over 18 years and with Catholic Charities Hawaii over 26 years.

I have so many happy memories of members that are here and of those that are no longer with us. I have learned the true value of the honor and respect that had been the core value of the members. Words cannot fully express the gratitude I have in learning such values.

I intend to continue to be a part of the LMPSC family by volunteering and who knows, maybe one day become a member!

Please stay healthy and happy,
Cookie



Sharing Old Times

Submitted by Deb Braiman

I relocated from upstate New York, Roughly 3 hours north of New York City. Heavily forested, with clear streams and hiking trails. Immortalized by such artists as Thomas Cole of the Hudson River School of Art.

Thomas Cole is dead. Tree topped mountains, rolling Hills, the Red tailed hawk are almost a thing of the past. That's the problem with the tree, once you cut it down, it doesn't pop right back up. 200 years to grow, 2 weeks to burn in the wood stove.

Development ramped up after 9/11. A decade of peace in a beautiful country home was shattered with the sounds of heavy traffic in front and garbage thrown on my lawn,. Drowning out the serenity of birdsong in my backyard. 36 years ago, I answered an ad for a pen pal, with a local student in Hawaii. Our bond of friendship deepens with each passing year, along with my love affair with Hawaii and its people. When I lost my eyesight, my friends simply said "come home".

Moving at the start of Covid was a shock. My ears were caressed by the sound of the egret, the Bobo. Walking along the beach, I marveled – no broken seashells to cut my feet. Previous trips to Hawaii enriched my senses –Iao Valley, the Bas Relief tiles in the ceiling of Iolani Palace. Although I am blind now, these images are embedded in my mind and heart.

I remember feeling sad to see a dolphin stuck in a small pool in the Hilton Hawaiian Hotel. For the tourists, you know.

Tourism is almost the lifeblood of Hawaii. island nations, consider tourism to be their mainstay for the local economy. For most of my life, I lived close to the land. A self-taught gardener, the land yielded enough fruit and vegetables for myself and my animals for a year. In this way, I learned a little about how the land gives back when taken care of. How each life form, from the smallest bug to the tallest tree, co-creates in harmony. How each breath is a song, in concert with the chorus of rain, wind, earth and sun. How fragile it is.

When I first moved here, local news was filled with [stories of tourists sitting on the turtle](#) on the beach. People took video of it, and the police were called to remove a group of 21 nature lovers, who complained that they were one with the federally protected sea turtle or something like that. Tourism was strictly limited after the pandemic hit. During that time, only about 4 months, subtle changes began to appear.

Undisturbed, turtles were able to hatch more offspring. The waters of Hanauma Bay were alive again with fish species that hadn't been seen in 20 years. Local scientists were able to monitor the health of the reef without having their equipment damaged by divers. Suntan lotion no longer polluted the water.

Hawaii is our home. It is also home to species of plant, bird, reptile, insects, mammals and fish found only on our islands. Once they're gone, they won't come back. My hope is that visitors, and locals alike, cherish all that Hawaii has to offer.

When Covid lifts, and I can walk on the beach, I want to hear the ocean. The bark of the monk seal, the honk of the nene, the splash from a dolphin. I don't want to hear that the turtle, struggling to hatch her eggs, was the last one.

OKINAWA NENCHOSA CLUB UPDATE

By Lari Koga

October Festivities

At the October 28 meeting, a slate for 2022 officers were presented: President Jane Higa; Vice-Presidents Harry Nakasone & Richard Tada; Secretary Laraine Koga; Treasurer Diane Kawakami; Board members Nancy Gakiya, Janet Ito, Flora Nakasone, Frank Toma, & Juliet Shimabukuro. There were no nominations from the floor. A vote was called & all members on the slate were elected.

Members who shared their vocal talents were Robert Ishihara and Jean Ishihara. "Tinsagu Nu Hana" was danced by Okinawa dance class members Suzuko Demola, Takako Goya, and Nobuko Oshiro. Bingo game was the highlight, and of course, ended with a kachashi!.

The November 4 meeting showcased singers Dorene Toma and Frank Toma. "Toraji Endo" was performed by Okinawa dance members Yoshiko Kumura, Yaeko Miyahira, Chieko Tokuda, & Janice Yokooji. Bingo game followed. The meeting ended with everyone dancing to "Shimanchu Nu Takara".

November 14: James Toma made his singing debut & Richard Tada sang "Uminchu no Kaze", an Okinawan song. Diane Kawakami performed the Okinawa dance "Hanayo". After the bingo games & kachashi, members left with smiles.

If you have any suggestions for future ONC programs, let any of the club officers know.

Next meeting: December 2 and 9.

Cc Pictures: Diane & Tomie "Elsie" kachashi dancing and Robert Ishihara singing.



JAPANESE CULTURAL CLUB UPDATE

By Clarice Kumura

Happy Holidays

Now that we have your attention, we would like to announce that our Japanese Cultural Club will have its first in-person meeting on Monday, January 10, 2022, beginning at 9 a.m., at LMPC. Although we are so excited to see all of you, we are not certain as to the number of members we can have in attendance for each meeting. Therefore, we ask for your patience as we determine who will be attending. We will do all we can to keep you informed. We look forward to a much more promising 2022.

This past year had been progressing until we all felt the setback when COVID numbers rose to a dangerous level. However, due to the efforts of Suzie Chun-Oakland and her staff, LMPSC remained active with most of its classes opened, although limited to 10 persons. Also, thanks to the tech savvy staff, we were able to attend classes through Zoom.

We look forward to a great holiday season as we prepare for holiday festivities with family and friends. May you all be blessed with laughter, peace and love.

FILIPINO CULTURAL CLUB UPDATE

By Wilma Ibay

Christmas Is In The Air

Yuletide season is the happiest part of the year. Family, friends, acquaintances far and near gather together to celebrate the birth of our Lord Jesus Christ.

Our Ohana wishes each and everyone a very Happy Christmas and a safe and healthy new year, from Ridy and Wilma Ibay.

“Wishing you the blessings of peace, love, and joy this Christmas” by Sergia Ababa.

“Christmas is the happiest day in my life, the day our Lord Jesus was born.” by Aurelia Tiburcio.

“Christmas is for everybody- young or old especially for the children.” by Letty Dolor.

“Christmas is the night our Lord was born. Happy Birthday Jesus and Merry Christmas to all.” by Doris Maielua.

“Christmas will always be as long as we stand heart to heart and hand in hand.” by Leonie Ramirez.

Merry Christmas and God bless us all. Be safe- see you all 2022.



Plant Sale- “A Big Success”

Thanks to all who donated a variety of plants during our recent plant sale. A special “thank you”

To Mae Hong, who helped coordinate this event. Hopefully, we will be able to have another plant sale, perhaps during the Spring of 2022.

A big MAHALO to all volunteers who helped with our Thanksgiving Drive-Thru event, held on Wednesday, November 10, 2021.

Thank you to the “Special Events Group” along with everyone else who worked so diligently in the heat of the morning sun, packing and distributing the meals so efficiently.

Also, many thanks to those who helped our members check-in for classes before entering the building, and to the volunteers who were at the front desk, answering their many phone calls and also helped out at the thrift shop.

EVERYONE DID A GREAT JOB!

-Jean Sugihara



Iluminada “Luming” Acosta
Estrella Agbayani
Virginia Ahuna
Anthony “Tony” Balamero Sr.
Hiromi Bauermann
Amy Bratt
Cathy Caberto
Lynn Carey
Sharon Carroll
Mary Lynn Chan
Grace Chang
Aida Chapman
Betty K.I. Cheah
Catherine Chinn
Salwyn Chinn
Stanley Choi
Susan Choy
Soledad “Sally” Corpus
Veronica Diniega
Akira “Steve” Doi
Richard Frey
Edith Fujihara
Clifford Gakiya
Carol Goto
Helen Goya
Hames Haioka
Carol Hamasaki
Barrymore “Barry” Hanakahi
Bradley Hara
Anita Hasegawa
Warren Hasegawa
Arlene Heck
Leonore Higa
Tomie “Elsie” Higa
Evelyn Ho
Paul Hoe
Chang Cheng “Charles” Hu
Lyn Hurlbutt
Wilhelmina Ibay
Susan Imai
Henry “Easy” Isara
Edward “Ed” Ishida
Yasumori Ishikawa
Joanna “N” Ito
James “Jimmy” Iwamura
Eileen Iwanaka
Edna Jackson
Lisa Jama
Sally Joyce
Linda Kapua
Muriel Kashiwa
Carol Kihano
Carolyn Kimura
Carol Kishimoto
Irene Kiyabu
Ralph “Nobu” Kiyun
Reagan Kiyuna
Clarice Kumura

HAPPY BIRTHDAY!

HAPPY BIRTHDAY!

Carol Kuwahara
 Gerald Leao
 Bessie Lee
 Young Soo Lee
 Ferdinand Madriaga
 Gladys Martin
 Verna McLean
 Lauren Mineshima
 Janet Miyashiro
 Frances Miyazono
 Grace Morikawa
 Ellen Murai
 Jo-Ann Murata
 Lynn Nakada
 Charlene Nakagawa
 Janet Nakamura
 Roy Nakasato
 Jeanne Nakasone
 Mitsuko Nakasone
 Laine Nakayama
 Gary Namba
 Gail Ninomoto
 Jean Nishida
 Masako Oda
 Fujiko Okita
 Doris Oshiro
 Hideko Oshiro
 Ronald Oshiro
 Karen Sakihama
 Estelita Sarmiento
 Verna Schubert
 Kate Shigetani
 Sadako Shimabukuro
 Kiyoko Shinsato
 Claire Shirota
 Yoshiko Sickels
 Susan Sing
 Lucia Soriano
 Jean Sugihara
 Pamela Sunwoo
 Ella Tagawa
 Alexander Takaki
 Noboru Taketa
 Gail Tamashiro
 Lorraine Tamashiro
 Patsy Tamashiro
 William Tate
 Woon-Man To
 Donna Tokuda
 Janet Tokuda
 Kiet Luong Truong
 Ruby Uehara
 Yuriko Vaughn
 Maria Villanueva
 Neena wahi
 Ellen Wong
 Frederick "Fred" Wong
 Paula Yamamoto
 Linda Yara

CHINESE CULTURAL CLUB UPDATE By Dorothy Mau

Officers for 2022

Twelve members attended our November meeting and election of officers were held:

President Dorothy Mau, Vice President Cindy Choy, Secretary Teresa Sasaki, Treasurer Tan Fung Chan, Ass't Treasurer June Ng, Auditor Irene Kuhns, Advisor Beverly Mau, Sergeant at arms Chow Fook Choy and Klaus Lai

After the election, we had a good time celebrating our belated 50th Anniversary. We took home Panda Express long life noodles with orange chicken and fortune cookies. We also had favors and door prizes! We will meet again on December 17,2021 Friday. Until then Tai Gah.

Doong Jit Fai Lok, Merry Christmas to all!

HAWAIIAN CULTURAL CLUB UPDATE By Rolando Manuel

Open to All!

None of us could have ever imagined that this COVID-19 battle would last as long as it has. This pandemic continues to disrupt every aspect of our lives creating a world of uncertainty for so many in our state and community. The Hawaiian Cultural Club meets on the first and third Tuesday (of the month). Our membership is open to all who wants to expand their horizon on the Hawaiian culture. Please keep yourself, family, and friends healthy and safe.

Mele Kalilimaka and Hauoli Makahiki Hou!!!!!!!!!!!!!!!!!!!!!!!!!!!!!!



HAPPY BIRTHDAY

(continued)

Hyang-Suk "Sue"
 Yashima
 Raymond Yee
 Denise Yess

Jeanette Yoshimori
 Marjorie Yoshioka
 Patrick Young
 Richard Young

Sylvia Young
 Carol Zukemura



Mahalo

*Thank you so much for
your generosity!*

PIKAKE (\$1000+)

OHI'A A LEHUA (\$500)

KAHILI GINGER

(\$250+)

Endo, Edith
Kawakami, Hannah

HIBISCUS (\$100+)

Alvarado, Dorothy
Chan, Corinne
Chan-Cantorna, Mela
Emoto, Carolyn
Hong, Mae
Iwamoto, Tsuyako
Iwamura, Steven
Iwasaki, George M/M
Joyce, Sally
Kishimoto, Joyce
Kinoshita, Karl
Luna, Antonia
Matsui, Masata
Nakamura, Roy
Narusawa, Kathryn
Oda, Bonnie
Park, Gary M/M
Shimokawa, Nancy
Sims, Stephanie
Sueishi, Sumie
Sugihara, Jean
Takai, Yurie
Tsukayama, Grace
Yashima, Wallace M/M
Young, Amy
Young, Henry

BIRD OF PARADISE (\$50+)

Chan, Arceli
Choy, Reginald M/M
Dibianco, Judy
Choy, Chow Fook M/M
Fukuda, Sandra
Harada, Irene
Hijirida, Kyoko
Ho, Evelyn
Isa, Harriet
Kawaguchi, Diana
Kimura, Grace
Manuel, Roland
Mau, Dorothy
Nakasone, Yoshiko
Nakata, Carla
Mau-Okimoto, Eleanor
Ramos, Pelagia
Salmon, Jeannie
Shimabukuro, Fujikko
Shiraki, Sharon
Takeuchi, Yasuko
Tucker, Rosemarie
Yi, Ellen
Yokooji, Janice
Young, Cherlyn
Young, Nancy

ANTHURIUM (\$49 & UNDER)

Au, Virginia
Campos, Lucina
Chan, Lina
Chang, Yuet
Chinbana, Mildred
Fujioka, Ann
Goya, Takako

Hagihara, Amy
Inouye, Diane
Kaioka-Fuller, June
Kauahikaua, Marianne
Lee, Mabel
Lee, Pearl
Maieula, Doris
Mau, Beverly
Mikami, Beatrice
Milner, Ethel
Miyashiro, Walt
Miyazawa, Yasuko
Nakahodo, Henry M/M
Nakama, Gayle
Pangelina, Jan
Platt, Annette
Raytarr, Gloria
Saiki, Yoshie
Takeshita, Karen
Watanabe, Rae
Yoshizawa, Janice

IN-KIND GIFTS

Asao, Bryant
Arens, Jerry
Boyd, Susan
Bratt, Amy
Burrows, Carol & John
Ching, Adele
Eastlack, Sandra Joy
Emoto, Carolyn
Favor, Estrella
HIPHI – Lindsey Ilagan
Hong, Mae
Ige, Janice
Isa, Jo
Jackson, Edna

Kageno, Lori
Kaneshiro, Gloria
Kingsmill, Ellyn
Kobata, Marilyn
Kwock, Betsy
Leung, Roberta
Madriaga, Ferdinand
Manuel, Roland
Myers, Lee
Nakasone, Sumiko
Nazarina, Mary
Nip, Richard
Ojiri, Donald
Oka, Irene
Oshiro, Cynthia
Pang, Leslie
Premier Benefit
Consultants-George Doi
Sakagawa, Amy
Sakamoto, Atsuko
Shigemitsu, Jon
Sueno, Myunghee
Talva, Tiiu
Tulba, Sharon
Underwood, Stephanie
Uyeda, Coleen
Uyehara, Phil
Wong, Aileen
Yamamoto, Jean
Yoshida, Mark
Zukemura, Carol

Class & Club Christmas Messages

*Please note some pictures and messages were re-used from last year



3D Origami
"Have a wonderful Christmas!"



Advanced Enka
"Merry Christmas, everyone!"



Adv. Beginner Ukulele
"May there be music in your hearts and peace in your soul."



American Sign Language
"Sending you the very best wishes for a joyous holiday season!"



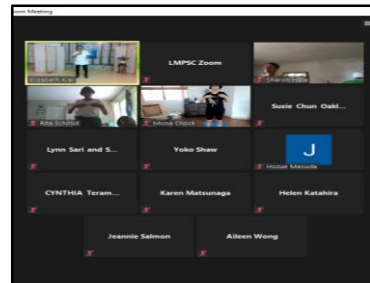
Basic Japanese Language
"Happy holidays and peace to you always!"



Basic Ukulele
"Looking forward to seeing you next year!"



Beginner iPhone Class
"Merry Christmas!"



Body & Brain Beg. Yoga & Tai Chi
"Holiday blessings to everyone!"



Brain Exercise
"Merry Christmas everyone!"



Chair Yoga
"Mele Kalikimaka"



Crafts by Florence and Te'Mari
"Happy Holidays to All!"



Digital Technology
"Merry Christmas!"



English Class
"Merry Christmas!"



Exercise w/ Karate
"Best wishes during the holidays!"



Folk Sing Along
"We wish you peace, love of family & friends and let us not forget the less fortunate."



Fusion
"Merry Christmas from Fusion. May the season bring good tidings."



Garden Group
"We are thankful for YOU!"



Hanafuda
"Loves & hugs sent your way at Christmas and always!"



Happy Senior Serenaders
"Happy Holidays and Stay safe."



Harmony's Hula
"I am so happy & proud of our seniors. Mele Kalikimaka!"



Health & Life Circle
 "Enjoy life to its fullest! Happy holidays!"



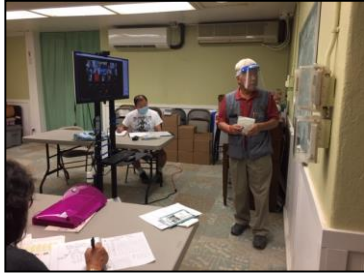
Intermediate Ukulele
 "Hope, peace and joy!"



Intro to Yoga
 "Love & peace at Christmas!"



Japanese Calligraphy
 "Arigato gozai masu. Merry Christmas!"



Korean Language
 "Merry Christmas!"



Lanakila Jam Group
 "Merry Christmas!"



Line Dance
 "Merry Christmas!"



Mah Jong
 "Merry Christmas!"



Men & Women's Shed
 "Happy Holidays from all of us!"



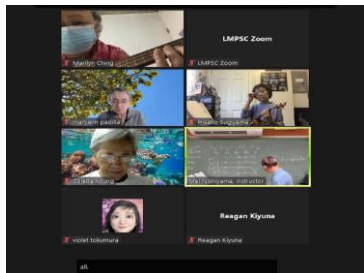
Needle and Thread
 "May all the blessings of the new season be with all of you. Stay safe & we look forward to a new year."



Okinawan Dance
 "We wish all of you a happy and safe Merry Christmas!"



Online iPhone Class
 "Merry Christmas!"



Picking Ukulele
 "Merry Christmas!"



Ping Pong
 "We wish you Happy Holidays and Very Merry Christmas."



Principles of Tai Chi
 "Please enjoy time with your family and friends this holiday season!"



Qi Gong
 "Merry Christmas!"



Sahm Bo Dahn
 "Happy Holidays to all members from the Sahm Bo Dahn group! We miss you and look forward to seeing everyone soon."



Sewing by Nakasone
 "Merry Christmas, but we hope to see you sooner!"



Sing For Your Life
 "May the joy of song be a part of your holidays!"



Special Events Group
 "Happy Holidays!"



Stretch & Tone
 "Wishing you all the magic of the holidays!"



Sword & Fan Tai Chi
 "Peace to All."



Tai Chi
 "Peace to All."



Tai Chi for Health
 "Mele Kalikimaka! Wishing the LMPSC Ohana the warmest of wishes to you and your family. Keep safe, stay fit & healthy."



Tai Chi w/ Tommy
 "Have a great Christmas!"



Taisho Koto
 "We wish you a very Merry Christmas."



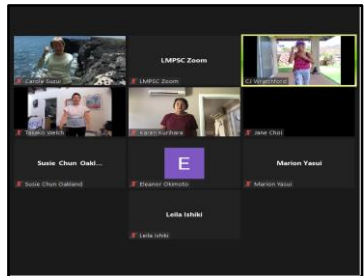
Tap Dance
 "Mele Kalikimaka from the Tap Dance Class!"



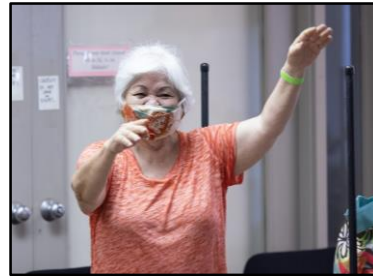
Veteran's Talk Story
 "Stay Well!"



Victor's Kapakahi Group
 "Cheers and take care during the holidays!"



Zumba Gold
 "Merry Christmas!"



Yui Buyo
 "Have fun during the holidays! Merry Christmas!"

Cultural Clubs



Chinese Cultural Club
 "Doong Jit Fai Lok!" (Merry Christmas)



Filipino Cultural Club
 "Wishing you ALL a very Merry Christmas. Maligayang Pasko Sa Inyong Lahat"



Hawaiian Cultural Club
 "Mele Kalikimaka!"



Japanese Cultural Club
 "Have a wonderful, happy and safe holiday."



Korean Cultural Club/Dance
 "Merry Christmas! Mele Kalikimaka!"



Okinawa Nenchoha Club
 "May your Christmas sparkle with Love and Laughter. Merry Kurisumasu."



Portuguese Cultural Club
 "We are blessed! Season's greetings to everyone!"

December Class Schedule

Day	Time	Class	Facilitator	Location
Monday	8:30 AM	Picking Ukulele	Nishiyama	Sewing Room
	9:30 AM – 11:30 AM	Victor's Kapakahi Group	Tangonan	Activity Room
	9:30 AM	Tai Chi for Health	Lau	Library Room; ONLINE
	10:00 AM	Harmony's Hula (On Break)	Brighter	Sewing Room; ONLINE
	10:30 AM	Qi Gong	Lau	Library Room; ONLINE
	10:30 AM	Intro to Yoga	Hasegawa	Lanai
	12:00 PM	Ping Pong	Ream	Lanai
	Tuesday	8:00 AM	Online iPhone Class	Rasmussen
8:00 AM		Chair Yoga (On Break)	Kauahikaua	ONLINE
9:00 AM		Hawaiian Cultural Club (1 st & 3 rd Tues of the month)	Manuel	Activity Room
10:00 AM		Harmony's Hula (On Break)	Brighter	Sewing Room; ONLINE
10:00 AM		Beginner's iPhone Class	Kawasaki	Library Room
10:15 AM		Sahm Bo Dahn	Higuchi	Lanai
11:30 AM		Japanese Calligraphy (On Break)	Usami	Sewing Room
1:00 PM		Line Dance (On Break)	Sonson	Lanai
Wednesday	8:00 AM – 2:30 PM	Digital Technology	Lanakila Pacific	Activity Room
	8:00 AM	Tai Chi	Koike	ONLINE; Sewing Room
	8:30 AM	Lanakila's Jam Group	Oshiro	Library Room
	9:30 AM	Portuguese Cultural Club (1 st & 3 rd Wed. of the month)	Frank	Activity Room
	9:45 AM	Sewing by Nakasone	Nakasone	Craft Room
	10:00 AM – 12:00 PM	Korean Cultural Club/Dance	Lee	Lanai
	10:30 AM	Happy Senior Serenaders	Ojiri, Ramiro, Young	Sewing Room; ONLINE
	1:00 PM	Body & Brain Beg. Yoga & Tai Chi (On Break after 12/15)	Body & Brain Staff	ONLINE; Sewing Room
2:15 PM	Sahm Bo Dahn	Video	ONLINE	
Thursday	8:00 AM – 2:30 PM	Digital Technology	Lanakila Pacific	Activity Room
	9:00 AM – 10:30 AM	Okinawa Nenchosha Club	Higa	Lanai
Friday	8:00 AM	Tai Chi	Koike	ONLINE; Sewing Room
	9:00 AM	Fusion	Gittelman	ONLINE; Sewing Room
	9:00 AM	Yui Buyo	Sugai	Lanai
	9:30 AM	Chinese Cultural Club (4 th Friday of the month)	Mau	Activity Room
	10:00 AM- 12:00 PM	Tap Dance	Martin	Lanai
	10:00 AM – 2:30 PM	Enka	Arakaki	Sewing Room
	10:15 AM	Zumba Gold (12/3 and 12/10 only)	Wratchford	ONLINE
	11:15 AM	American Sign Language (On Break after 12/3)	Shimizu	ONLINE
11:30 AM	Crafts by Florence & Te'Mari	Tamura, Tamura-Boyd	Library Room	
12:00 PM – 2:30 PM	Ping Pong	Ream	Lanai	
Saturday	9:00 AM – 12:00 PM	Filipino Cultural Club	Ibay	Activity Room
	11:00 AM	Korean Language	Suh	ONLINE
Sunday	9:30 AM	Tai Chi for Health	Lau	ONLINE
	10:30 AM	Qi Gong	Lau	ONLINE

Thrift Shop open Monday through Friday from 8:00 am to 11:00 am by appointment only. Call (808) 847-1322.

*Classes are about an hour long, unless specifically noted. Classes subject to change.

As of 10/15/21

December 2021

SUN MON TUES WED THUR FRI SAT

			1 Queen Emma Summer Palace (1:00 pm) Apple Computer Training (1:00 pm) Holiday Relaxation (4:00 pm)	2 Coffee, Tea & Talk Story (7:30 am) Community Resources Mtg (12:00 pm)	3 10 Ways to Love Brain (1:00 pm) Apple Computer Training (1:00 pm) Korean Culture (2:15 pm) Dinner Together (5:00 pm)	4 CENTER CLOSED Korean Language ONLINE ONLY (11:00 am)
5	6 Nutrition and Gut Health (10:00 am) Healthy Brain and Dementia (1:00 pm) The Ponzi Scheme (3:00 pm)	7 Micro-greens Workshop (10:30 am) "Decompress w/ Stress" with Humana (1:00 pm)	8 Janet's Crafts (9:00 am) Walk at Magic Island (4:00 pm)	9 Coffee, Tea & Talk Story (7:30 am) BINGO (9:00 am) Medicare Part C with SHIP (1:30 pm) Dinner with the Chef (6:00 pm)	10 Christmas Bento P/U (10:00 am -12:00 pm) (must have pre-ordered) Christmas Program (10:30 am)	11 Filipino Cultural Club (9:00 am) Korean Language ONLINE ONLY (11:00 am)
12	13 Affinity Fraud (3:00 pm) Shredding (12:00 pm-4:00 pm) Dinner with the Chef (6:00 pm)	14 LAFF Guy (9:30 am) Center Mini Tour (11:00 am)	15 Liljestrand House Tour (10:30 am, 1:00 pm) Walk at Magic Island (3:00 pm)	16 How to Use Zoom (8:00 am) Tenrikyo Honolulu Ko Tour (1:00 pm, 2:00 pm)	17	18 Filipino Cultural Club (9:00 a.m.) Korean Language ONLINE ONLY (11:00 a.m.)
19	20 Holiday Craft Event (1:00 pm)	21	22 PAB Meeting (12:00 pm)	23 Senior Centers Meeting (12:00 pm)	24 CENTER CLOSED in observance of Christmas Day	25 Filipino Cultural Club (9:00 am) Korean Language ONLINE ONLY (11:00 am)
26	27	28	29 Lights in a Bottle (11:00 am)	30	31 CENTER CLOSED in observance of New Year's Day	

Center Staff

Susie Chun Oakland	Program Coordinator	suzanne.oakland@catholiccharitieshawaii.org
Riva Torno	Program Specialist	riva.torno@catholiccharitieshawaii.org
Iris Hiramoto	Membership Specialist	ihiramoto@catholiccharitieshawaii.org
Cookie Irvine	Program Support Asst.	cjoseph@catholiccharitieshawaii.org
Cyan Lau, LSW	Case Management	cyan.lau@catholiccharitieshawaii.org
Corinne Gyotoku, MSW	Case Management	corinne.gyotoku@catholiccharitieshawaii.org
Lodi Tapawan	Custodian	

Let's Keep in Touch

1640 Lanakila Avenue
Honolulu, HI 96817
(808) 847-1322

www.catholiccharitieshawaii.org

